



For Supervisor's use only

1

90179



NEW ZEALAND QUALIFICATIONS AUTHORITY  
MANA TOHU MĀTAURANGA O AOTEAROA



National Certificate of Educational Achievement  
TAUMATA MĀTAURANGA Ā-MOTU KUA TAEA

## Level 1 Human Biology, 2006

### 90179 Describe functioning of the human reproductive system

Credits: Three

9.30 am Wednesday 22 November 2006

Check that the National Student Number (NSN) on your admission slip is the same as the number at the top of this page.

You should answer ALL the questions in this booklet.

If you need more space for any answer, use the page(s) provided at the back of this booklet and clearly number the question.

Check that this booklet has pages 2–7 in the correct order and that none of these pages is blank.

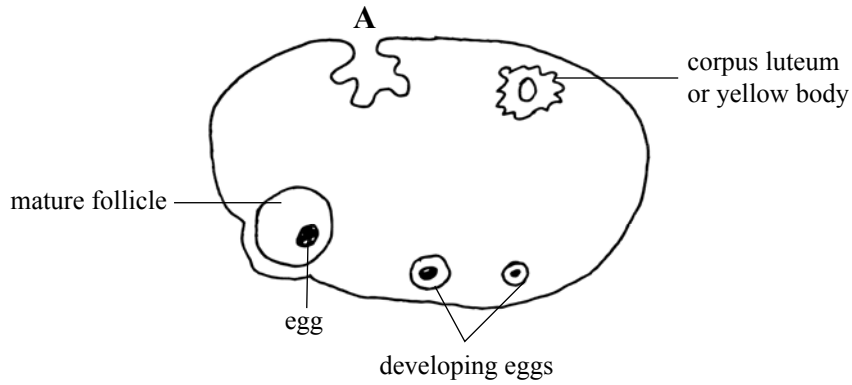
**YOU MUST HAND THIS BOOKLET TO THE SUPERVISOR AT THE END OF THE EXAMINATION.**

<i>For Assessor's use only</i>		<b>Achievement Criteria</b>	
<b>Achievement</b>		<b>Achievement with Merit</b>	<b>Achievement with Excellence</b>
Describe functioning of the human reproductive system.	<input type="checkbox"/>	Explain functioning of the human reproductive system.	<input type="checkbox"/>
		Discuss functioning of the human reproductive system.	<input type="checkbox"/>
<b>Overall Level of Performance</b>		<input type="checkbox"/>	

You are advised to spend 35 minutes answering the questions in this booklet.

## QUESTION ONE

The diagram shows a section through an ovary.



- (a) Name **and** describe the process that has occurred at **A**.

---



---

- (b) (i) Name the hormone the corpus luteum produces.

---

- (ii) Describe the function of this hormone.

---



---

**QUESTION TWO**

- (a) Describe **where** fertilisation occurs in a woman's body.

---

- (b) Describe the process of fertilisation.

---

---

---

**QUESTION THREE**

- (a) Explain why the testes need to be outside the body to make healthy sperm.

---

---

---

- (b) Give a function of the epididymis.

---

- (c) Explain **why** a man must have a high sperm count if his partner is to become pregnant.

---

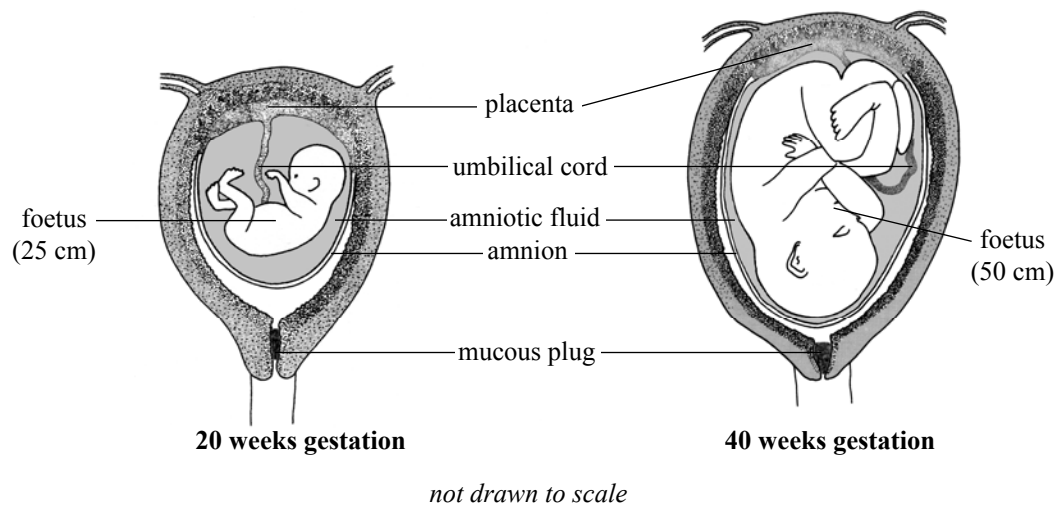
---

---



**QUESTION FIVE**

The diagram below shows some changes that occur in the uterus during the last four months of gestation.



- (a) Complete the table below to describe the **function** of the two structures.

Structure	Function
Amnion	
Mucous plug	

- (b) The lungs of a foetus are filled with amniotic fluid, so the foetus cannot breathe.

Explain how the foetus gets its oxygen.

---



---



---



---



---

Note that Question Five  
continues on the next page.





